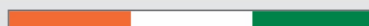


Performance that shows in
Every Flow

www.marutipump.com



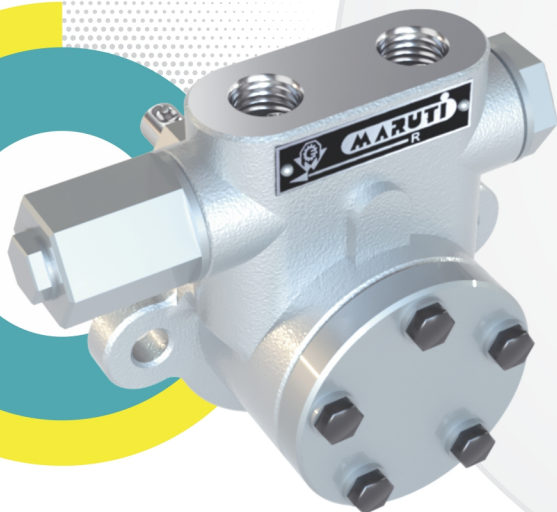


About Us

Since 1989 **ShriMaruti Precision Engineering Pvt Ltd** formerly known as Maruti Engineering works (MEW) has been manufacturing a wide of high quality gear pumps, Looking in retrospect, the company was founded by Mr. Govind Panchal and was involved in executing contract jobs for several big names in various industrial segments. With a steady and growth oriented approach, the company began manufacturing its own brand of Gear Pumps under the name of Maruti. Today, MARUTI has 3 dedicated manufacturing units in Ahmedabad, Gujarat that span across an area of 2000 square meters each. All units of MARUTI having Quality Management system ISO 9001:2015 from TUV SUD.

Fuel Injection Internal Gear Pump

ME FIG Series



Specification:

- Concept: Internal Gear Pump
- Capacity: 60 LPH to 6000 LPH
- Size: 3/8" BSP, 1/2" BSP, 3/4" BSP, 1 1/2" BSP Screw end connection
- Shaft Seal: Mechanical Seal (Up to 150°C)
- Pressure: Up to 35 bar
- MOC: Cast Iron vs Alloy Steel & Non-Ferrous

Application:

Oil Burner, Boilers, Force Feed Lubrication, Most Suitable for Furnace Oil (LSHS), LDO, DIESEL (HSD) & Bio-diesel, Palm oil residue, Kerosene, as Booster Pump for Heavy Diesel Engine, Pumping for oil Filter system

Specification:

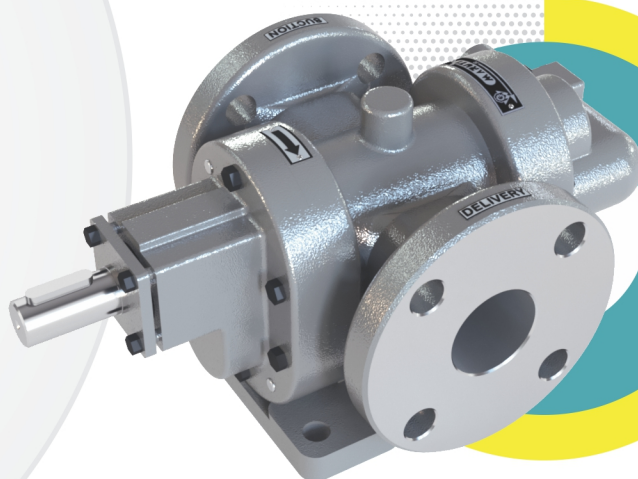
- Concept: Single Helical Gear Pump
- Capacity: 20 LPM to 500 LPM
- Size: 1/2" BSP to 3" BSP Screw end (8 Different Sizes)
- Shaft Seal: Mechanical & Gland Pack
- Pressure: Up to 10 bar
- MOC: Cast Iron vs Alloy Steel

Application:

Transferring for all types of non food grade viscous liquids, All Kinds of Viscous Oils and Petroleum Products, Rolling Mills, Steel Plants, Vegetable Oil Mills, Paint Industry, Food Industry, Ceramic Industry.

Rotary Twin Gear Pump

MERB Series



Specification:

- Concept: Single Helical Gear Pump
- Capacity: 8 LPM to 350 LPM
- Size: 1/4" to 2.5" BSP Screw end (9 Different Sizes)
- Shaft Seal: Mechanical & Gland Pack
- Pressure: Up to 10 bar
- MOC: All parts SS 316

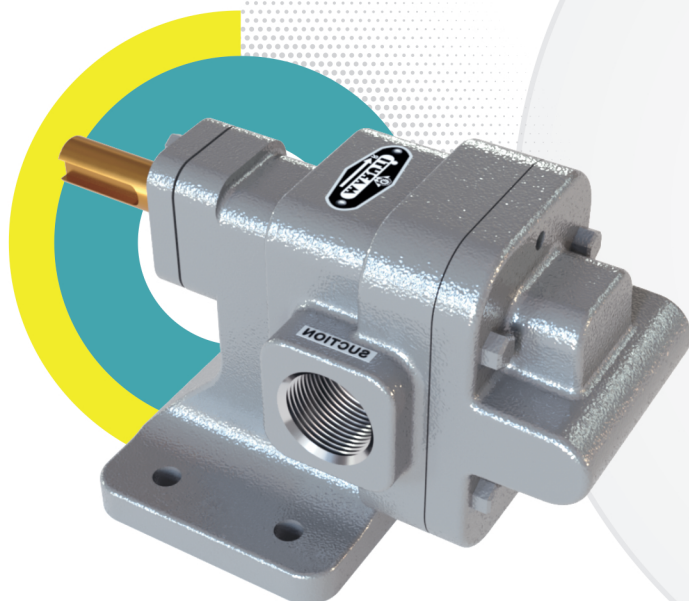
Application:

Food and Beverages industries,
Food grade liquid transfer application,
Pharmaceutical Industries, Chemical industries,
Paint industries, Cosmetic industries, liquid
like: Honey, Glucose, Liquid Sugar, Maple
Syrup, Milk, Hand Wash Liquid, Adhesive &
Sealant

All Stainless Steel Rotary Gear Pump MESX Series



Rotary Gear Pump ME Series



Specification:

- Concept: Single Helical Gear Pump
- Capacity: 20 LPM to 500 LPM
- Size: 1/2" BSP to 3" BSP Screw end (8 Different Sizes)
- Shaft Seal: Mechanical & Gland Pack
- Pressure: Up to 10 bar
- MOC: Cast Iron vs Alloy Steel

Application:

Transferring for all types of non food grade
viscous liquids, All Kinds of Viscous Oils and
Petroleum Products, Rolling Mills, Steel
Plants, Vegetable Oil Mills, Paint Industry,
Food Industry, Ceramic Industry.

Centrifugal Air Cooled Pump MECPP Series



Specification:

- Concept: Backpull out design
- Capacity -Q- : up to 300 m³/hr
- Head : up to 150 MLC
- Pump Size - DN : 25mm to 300mm
- Speed - N - : 1450 / 2900 rpm at 50 Hz & 3500 rpm at 60 Hz
- Temperature : up to +350 0C max.

Application:

Petrochemical & Oil Industries, Synthetic-Fibre Industries, Textile, Dyeing, Printing Industries, Plastic, Rubber, Paper Making, Timber Processing, Sugar, Food, Construction Industries.

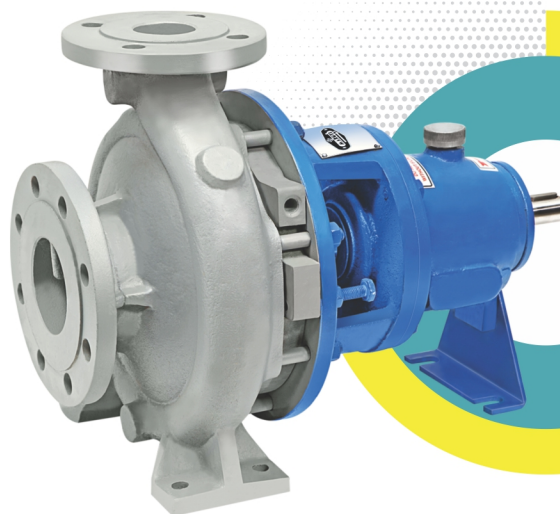
Specification:

- Concept: Backpull out design
- Capacity: Up to 1100 m³/hr.
- Head: Up to 150 MLC
- Size: 25mm to 300 mm
- Speed: 960 RPM to 3500 RPM
- Temperature: Up to 350°C max
- MOC: Cast Iron vs Alloy Steel / ferrous & non-ferrous

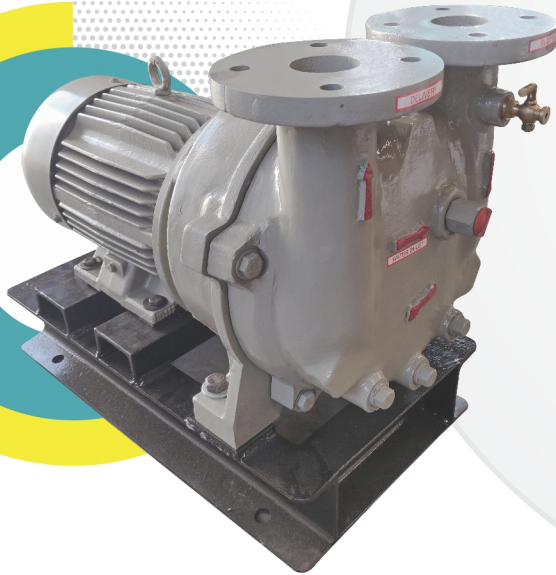
Application:

Chemical Process / Oil Process Industry, Bulk Drug, Pharmacy Process, Heating & A/C Plant, Sugar, Water, Pulp & Paper, Cementy, Agriculture, Textile, Dyes, Volatile Liquid, Hot Water, Fire Fighting etc.

Centrifugal Process Pump MECP Series



Monoblock Watering Vacuum Pump MX Series



Specification:

- Concept: Watering Vacuum Pump
- Capacity: 20m³/h to 330m³/h
- Size: 1" to 2"
- Shaft Seal: Mechanical & Oil Seal
- Water Consumption : Up to 30 LPM
- MOC: All parts SS 304 & cast iron

Application:

Filtration, Condenser Exhausting, Moisture Extracting, Priming, De-aeration, Solvent Recovery, Evaporation Distillation, Pneumatic Conveying, Autoclaves, Sterilizers, Soil Remediation, Vacuum Pans, Extruders.

Specification:

- Concept: Two Stage Vacuum Pump
- Capacity: 50m³/hr to 680 m³/hr
- Size: 3 HP to 30 HP
- Shaft Seal: Double Mechanical Seal
- MOC: SS 304 / Cast Iron / Cast Steel
- Speed: 2850 RPM & 1450 RPM



Two Stage Watering Vacuum Pump MXL Series

Application:

Models are quite versatile and find their applications in Pharmaceutical, Chemical, Petrochemical & Food Processing Industries, Breweries & Distilleries, Confectionery, Plastic, Textiles, Garments & Leather Processing Industries, Paper & Sugar Mills, Power Plants, Furnaces, Tiles & Ceramics Industries, Cement & Fertilizer Plants, Metallurgical Laboratories and is suitable for host of other Vacuum Applications like Vacuum Conveying, Packaging, Extrusion, Priming, Dehydration, Filtration & Sterilizing etc.

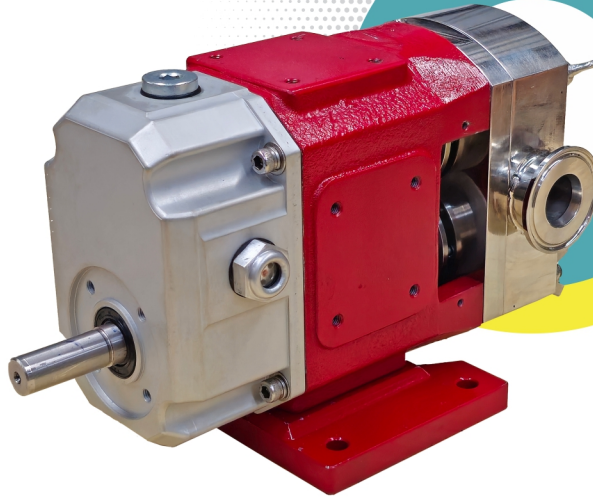
Specification:

- Concept: Tri Lobe Rotor
- Capacity: 5 LPM to 350 LPM @100 RPM
- Size: 1" to 4" BSP Screw end
- Shaft Seal: Mechanical Seal
- Pressure: 5 - 8 bar
- MOC: All parts SS316

Application:

High viscous liquid of food and Beverage Industry, Dairy, Bakery, Meat, Cannel Food, Candy, Chocolate, Cream, Paste, Grease, Cosmetic, Syrup, Paint, Sludge type liquids.

Lobe Pump MELB Series



Electric Motor



Specification:

- Capacity: 0.11 kw to 355 kw

We supply motors along with pumps to our prestigious clients.

Motors make: CG/ABB/Siemens/ and other made in india make also. We can supply normal and ex-proof motors which suits ignitable atmosphere present in hazardous locations such as zone 1, zone 2, class div 1 or div 2, motors are certified with: BASEEFA for ATEX, CSA FOR IEC AND EX DIV 2 AND DGMS / CCO & CE derivatives.



Reg. Office & Works:

SHRIMARUTI PRECISION ENGINEERING PVT. LTD.

A/7, Part-3, Mahadev Estate, Near Ramol Police Station,
CTM-Ramol Road, Ahmedabad-382 449, Gujarat-India.

Phone: **+91 79 29912966**

Cell: **+91 98258 42966** | Email: **info@marutipump.com**

www.marutipump.com

