

Performance that shows in  
**Every Flow**



## Fuel Injection Internal Gear Pump

ME FIG Series



### Specification

- Concept: Internal Gear Pump
- Capacity: 60 LPH to 6000 LPH
- Size: 3/8" BSP, 1/2" BSP, 3/4" BSP, 1 1/2" BSP  
Screw end connection
- Shaft Seal: Mechanical Seal (Up to 150°C)
- Pressure: 0 - 40 Bar
- MOC: Cast Iron vs Alloy Steel & Non-Ferrous
- Temp: Upto 150°C

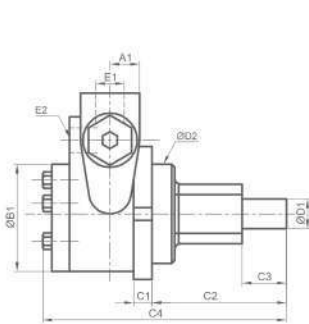
### Application

Oil Burner, Boilers, Force Feed  
Lubrication, Most Suitable for Furnace  
Oil (LSHS), LDO, DIESEL (HSD) &  
Bio-diesel, Palm oil residue, Kerosene,  
as Booster Pump for Heavy Diesel  
Engine, Pumping for oil Filter system

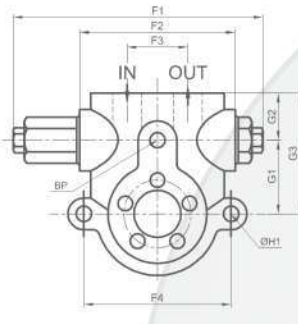
## Capacity Chart

MARUTI ME FIG SERIES – HIGH PRESSURE INTERNAL GEAR PUMP					
Pump Model	Suction x Discharge x By Pass (BP)	Capacity in LPH		Recommended HP	
		At 1440 RPM	At 2800 RPM	3kg/Cm <sup>2</sup>	40kg/Cm <sup>2</sup>
ME FIG-A60	3/8" x 3/8"	30 - 60	120	0.5	1.0
ME FIG-A90	3/8" x 3/8"	90	180	0.5	1.0
ME FIG-B150	1/2" x 1/2" x 1/4"	150	300	1.0	1.5
ME FIG-B150X2	1/2" x 1/2" x 1/4"	300	-	1.0	1.5
ME FIG-B300	1/2" x 1/2" x 1/4"	300	-	1.0	1.5
ME FIG-B450	1/2" x 1/2" x 1/4"	450	-	1.5	2.0
ME FIG-B600	1/2" x 1/2" x 1/4"	600	-	1.5	2.0
ME FIG-C1000	3/4" x 3/4" x 3/8"	1000	-	2.0	3.0
ME FIG-C1500	3/4" x 3/4" x 3/8"	1500	-	3.0	5.0
ME FIG-C2000	3/4" x 3/4" x 3/8"	2000	-	3.0	5.0
ME FIG-C2500	3/4" x 3/4" x 3/8"	2500	-	3.0	5.0
ME FIG-D3000	1" x 1" (IB)	3000	-	5.0	7.5
ME FIG-D4500	1" x 1" (IB)	4000	-	5.0	12.5
ME FIG-E6000	1 1/2" x 1 1/2" (IB)	6000	-	10.0	15.0

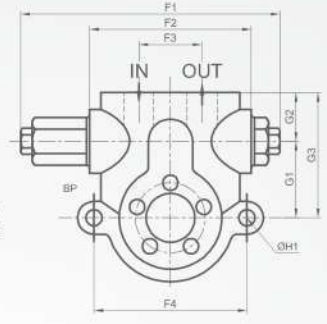
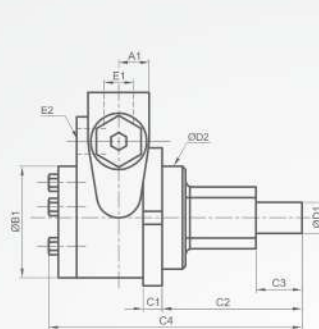
PART STANDARD MOC		
Sr. No.	Part	M.O.C.
1	Body	Fg260 C.I / PB2 / S.S.
2	Cover	C.I : C.I Nitrated / PB2
3	Rotter	EN-19 : 20mm Cr5
4	Gear	SAE : 8620
5	Idler Pin	PB2 ; Tungsten, Carbide
6	Bolts	M.S Hardened & Blacker



External Bypass



Internal Bypass



DIMENSIONAL DRAWING DETAILS																				
Model	Cap. in LPH at 1440 RPM	A1	B1	C1	C2	C3	C4	D1	D2	D3	BSP E1	BSP E2	F1	F2	F3	F4	G1	G2	G3	H1
ME FIG-IB	30 - 90	20	51	14	76	20	132	12	54	80	⅜"	-	139	90	38	92	40	27	67	11
ME FIG-IB	150 - 600	30	70	14	76	23	146	12	54	80	½"	-	143	90	44	92	48	27	75	11
ME FIG-EB	150 - 600	30	70	14	76	23	146	12	54	80	½"	¼"	143	90	44	92	48	27	75	11
ME FIG-IB	1000 - 2500	38	96	15	124	29	211	18	60	100	¾"	-	162	118	67	120	55	35	90	13
ME FIG-EB	1000 - 2500	38	96	15	124	29	211	18	60	100	¾"	⅜"	162	118	67	120	55	35	90	13
ME FIG-IB	3000 - 6000	85	115	18	127	37	275	22	80	120	1"		211	150	80	150	80	40	120	15

**ShriMaruti Precision Engineering Pvt. Ltd.**

A/7, Mahadev Estate, Part-3, Nr. Ramol Police Station,  
CTM-Ramol Road, Ahmedabad-382 449, Gujarat-India.

+91 98258 42966 | [info@marutipump.com](mailto:info@marutipump.com)

[www.marutipump.com](http://www.marutipump.com)