

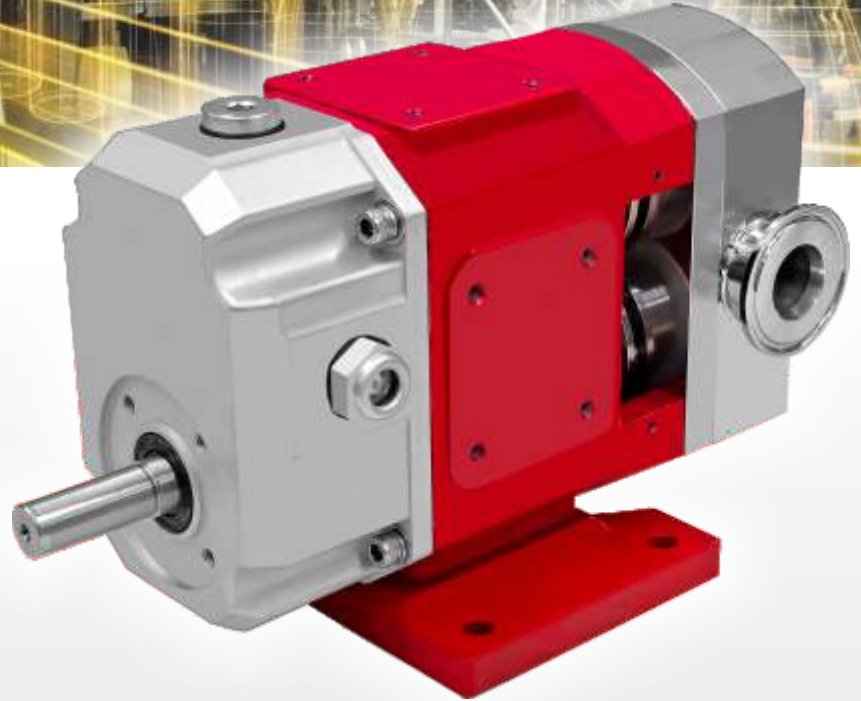


Performance that shows in
Every Flow



All Stainless Steel **Lobe Pump**

MELB Series



Specification

- Seals at Front Side
- Designed for Smooth Flow
- Gentle Liquid Handling
- Can Run in Dry Condition
- Suitable for Low & High Viscous Liquids
- Highest Efficiency • Easy Maintenance
- Low Noise Level
- 100% Food Grade
- Temp: Upto 250°C

Application

All types of Food & Pharma Application like:

- Dairy • Bakery • Meats • Canned Foods
- Beverages • Candy • Flavorings
- Dressings • Cosmetics • Drugs • Syrup
- Cream • Pill Pastes • Slurries • Extracts
- Latex Emulsion • Tomato Paste
- Fruit Paste • Chocolates
- Lotions • Shampoos

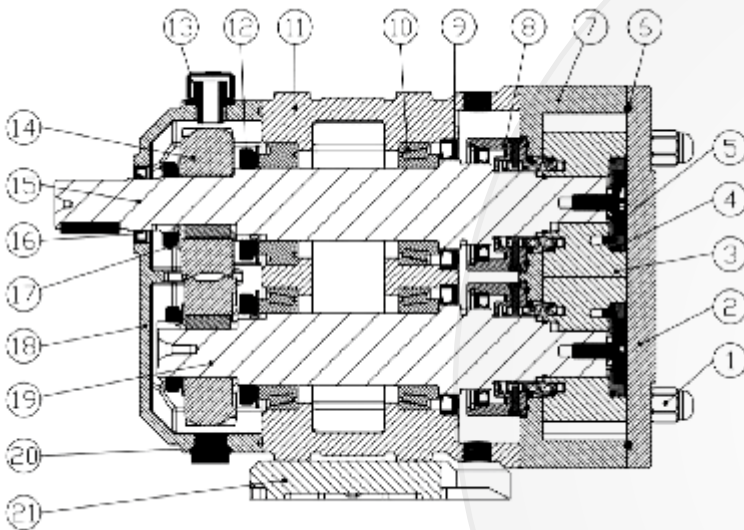
Capacity Chart

Pump Model	Port Size Standard TC clamp	Displacement Flow @100rpm		Max. Speed (RPM)	Pressure max (Kgf/cm ²)	Weight (Kg)
		LPM	US. GPM			
MELB-100	1"	5	1.3	960	10	16
MELB-150	1.5"	14	3.7	700	10	30
MELB-200	2"	30	7.9	600	10	55
MELB-250	2.5"	75	19.8	600	10	100
MELB-300	3"	175	46.2	600	10	150
MELB-400	4"	340	89.8	500	10	240
MELB-500S	5"	500	132.0	400	10	350
MELB-500L	5"	850	224.4	400	10	380

SR. NO	PARTS	MOC
1	Pump Chamber	SS-316
2	Tri-Lobe-Rotor	SS-316
3	Top Cover	SS-316
4	Shaft	SS-316
5	Shaft Seal	Mech. Seal (Tc vs Tc)
6	Gear	EN-24
7	Casing	CI
8	Gear Box Cover	ALU
9	Lip Seal	Viton
10	O Ring	Viton

Options

- Heating Jacket
- Electric Heating
- Pump Skid with Gear Motor



Main components in pump body

(1) Head screw (2) Pump cover (3) Rotor (4) Eccentric washer (5) Rotor screw (6) Pump cover O-ring (7) Pump body (standard type) (8) Mechanical seal assembly (9) Framework oil seal (10) Tapered roller bearing (11) Gear box chamber (12) Round nut (bearing end) (13) Refueling vent cap (14) Helical gear (15) Main shaft (16) Rear case cover framework oil seal (17) Round nut (gear end) (18) Rear case cover (19) Counter shaft (20) Oil drain screw (21) Pump base (left and right position)



Shaft Seal



Tri Lobe Rotor

ShriMaruti Precision Engineering Pvt. Ltd.

A/7, Mahadev Estate, Part-3, Nr. Ramol Police Station, CTM-Ramol Road, Ahmedabad-382 449, Gujarat-India.

+91 87583 29666 | info@marutipump.com

www.marutipump.com

